

General  
Arrangement





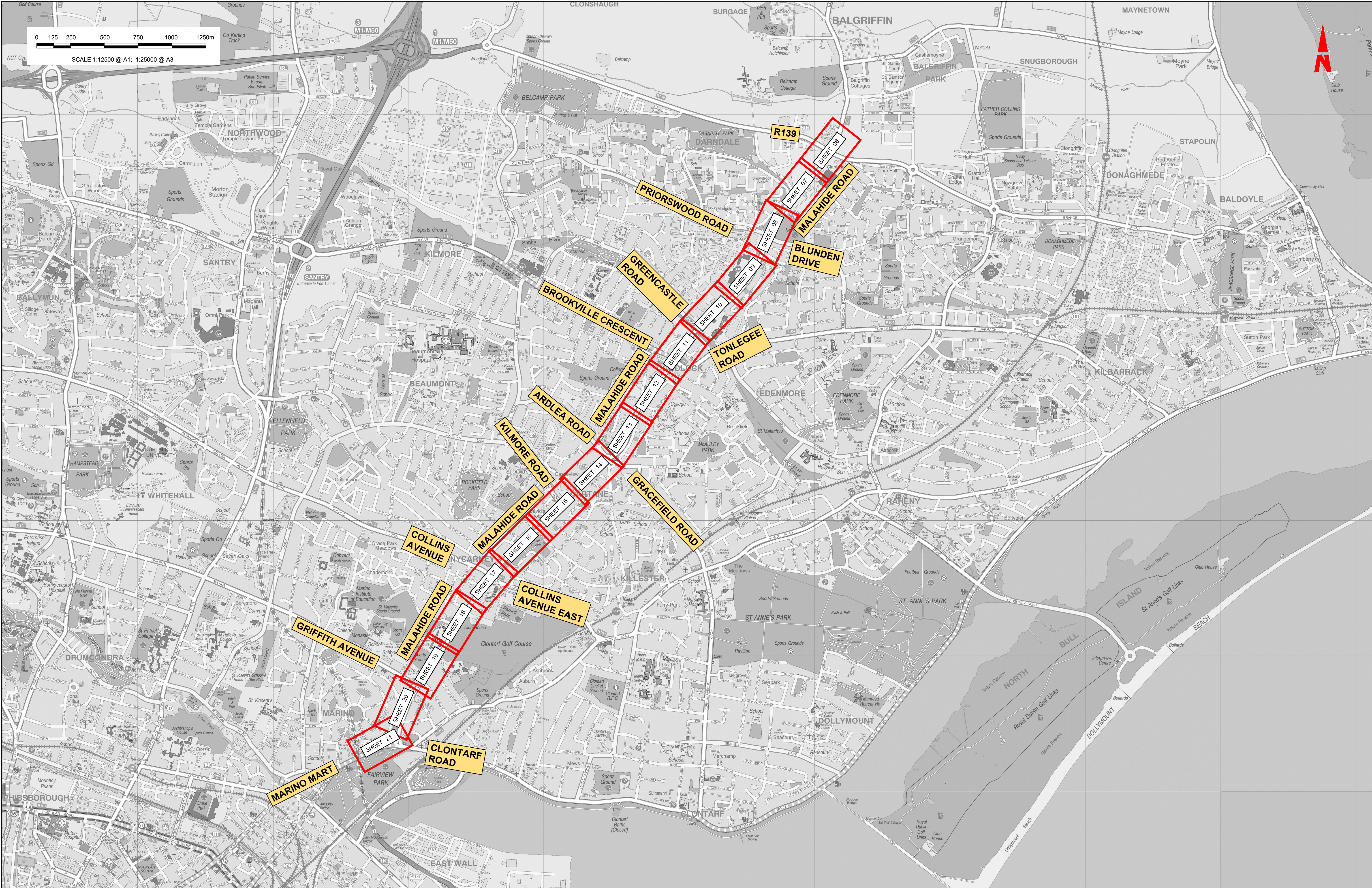


# CLONGRIFFIN TO CITY CENTRE CORE BUS CORRIDOR SCHEME

## CLONGRIFFIN TO CITY CENTRE CORE BUS CORRIDOR SCHEME. GENERAL ARRANGEMENT

Programme Title <b>BUSCONNECTS DUBLIN          CORE BUS CORRIDORS INFRASTRUCTURE WORKS</b>			
Drawing Title CLONGRIFFIN TO CITY CENTRE CORE BUS CORRIDOR SCHEME GENERAL ARRANGEMENT COVER SHEET			
Drawing File Name C:\Users\jv\OneDrive\Documents\BUSCONNECTS DUBLIN\CD\CD 001		Sheet Number 1	Status 101

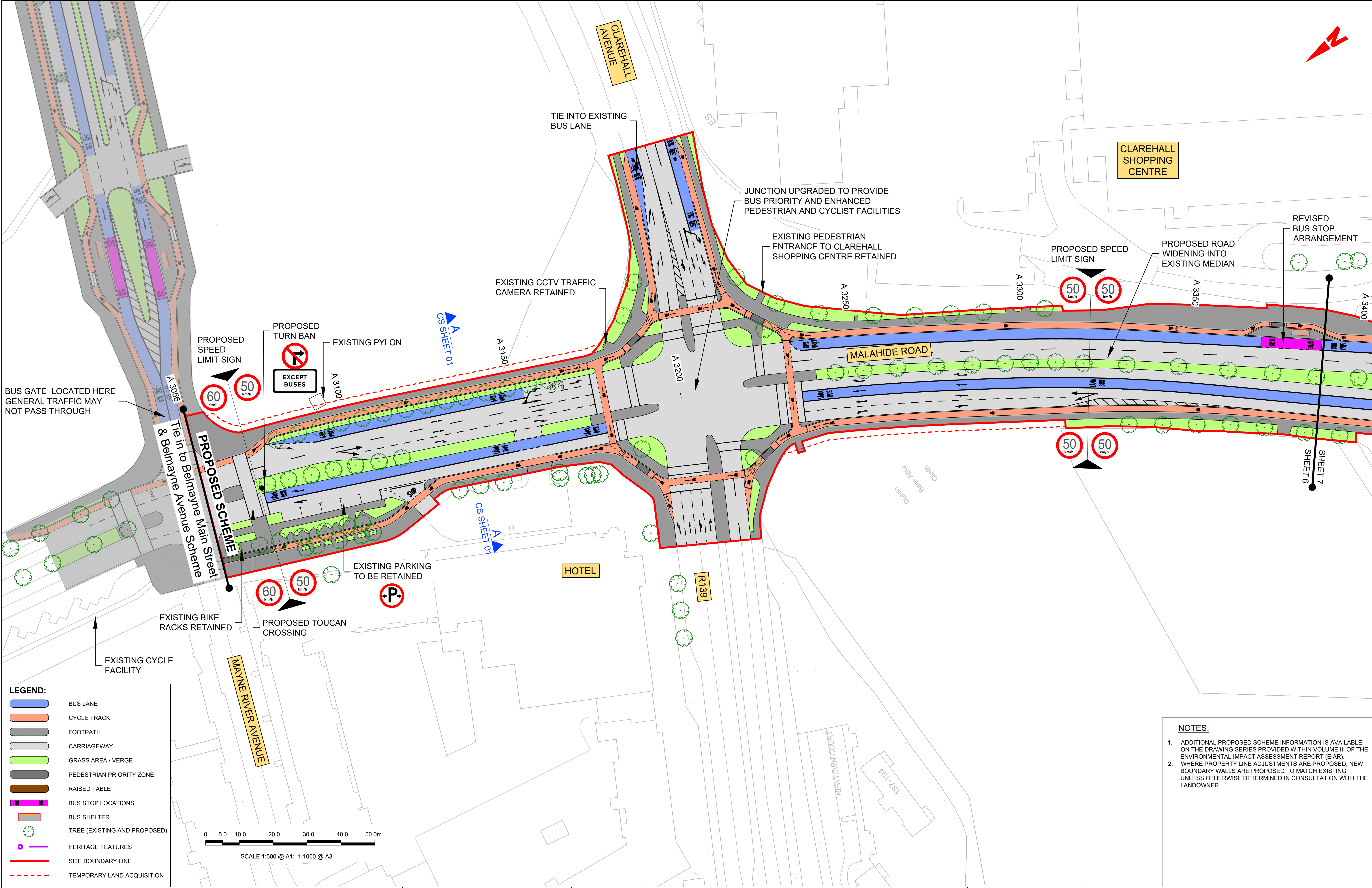




<p>Disclaimer</p> <p>a. © National Transport Authority (NTA) 2021. This drawing is confidential and the copyright in it is owned by NTA. This drawing must not be either loaned, copied or otherwise reproduced in whole or in part or used for any purpose without the prior permission of NTA.</p> <p>b. This drawing is to be used for the design element identified in the title block. Other information shown is to be considered indicative only. The drawing is to be read in conjunction with all other relevant design drawings.</p> <p>c. D.S. data used for plans are printed under © Ordnance Survey Ireland Government of Ireland. All rights reserved. Licence Number 2021/OSI_NMA_180 National Transport Authority. All elevations are in metres and relate to OSI Geoid Model (OSGM15) Mean Head. All Co-ordinates are in Irish Transverse Mercator Grid (ITM) as defined by OSI active local GPS station.</p> <p>d. Information concerning the position of apparatus shown on this drawing is based on drawings supplied by the utility owners, agents, and/or the utility works contractor, whilst every care has been taken in the preparation of this drawing, positions should be taken as approximate and are intended for general guidance only and no representation is made by the NTA as to the accuracy, completeness, sufficiency or otherwise of this drawing and the position of the apparatus. The information contained herein does not purport to be comprehensive or final as the apparatus is subject to being altered and/or superceded. Recipients should not rely on this information. Any liabilities are hereby expressly disclaimed.</p> <p>e. The information contained herein has been provided by the NTA but does not purport to be comprehensive or final. Recipients should not rely on the information. Neither the NTA nor any of its directors, officers, employees, agents, stakeholders or advisers make any representation or warranty as to, or accept any liability or responsibility in relation to, the adequacy, accuracy, completeness or comprehensiveness of the information provided as part of this document or any matter on which the information is based (including but not limited to loss or damage arising as a result of reliance by recipients on the information or any part of it). Any liabilities are hereby expressly disclaimed.</p>		<p>Rev</p> <p>Date</p> <p>Drn</p> <p>Chk'd</p> <p>App'd</p> <p>Description</p>		<p>Client</p> <p>Údaráis Náisiúnta Iompair</p> <p>National Transport Authority</p>		<p>Engineering Designer</p> <p>AECOM</p> <p>MOTT MACDONALD</p>		<p>Programme Title</p> <p>BUSCONNECTS DUBLIN</p> <p>CORE BUS CORRIDORS INFRASTRUCTURE WORKS</p>	
<p>M01</p> <p>03/12/21</p> <p>PP</p> <p>JH</p> <p>CA</p> <p>ISSUE FOR PHASE 4: PLANNING</p>		<p>Date</p> <p>03/12/21</p> <p>Scale</p> <p>1:12500 @ A1</p> <p>1:25000 @ A3</p> <p>Project Code</p> <p>BCIDA</p> <p>Originator Code</p> <p>ACM</p>		<p>Drawn</p> <p>P.POCZATKO</p> <p>Checked</p> <p>J.HAWE</p> <p>Approved</p> <p>C.ACTON</p> <p>QMS Code</p>		<p>Drawing Title</p> <p>CLONGRIFFIN TO CITY CENTRE CORE BUS CORRIDOR SCHEME</p> <p>GENERAL ARRANGEMENT</p> <p>KEY PLAN</p>		<p>Drawing File Name</p> <p>BCIDA-ACM-GEO_KP-0001_XX_00-DR-CR-0001</p> <p>Sheet Number</p> <p>01 of 01</p> <p>Status</p> <p>A</p> <p>Rev</p> <p>M01</p>	

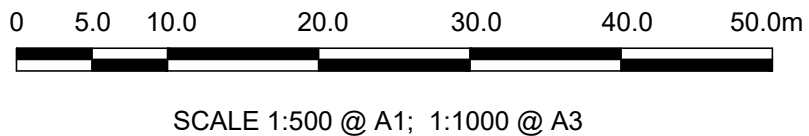
DO NOT SCALE USE FIGURED DIMENSIONS ONLY





**LEGEND:**

- BUS LANE
- CYCLE TRACK
- FOOTPATH
- CARRIAGEWAY
- GRASS AREA / VERGE
- PEDESTRIAN PRIORITY ZONE
- RAISED TABLE
- BUS STOP LOCATIONS
- BUS SHELTER
- TREE (EXISTING AND PROPOSED)
- HERITAGE FEATURES
- SITE BOUNDARY LINE
- TEMPORARY LAND ACQUISITION



- NOTES:**
- ADDITIONAL PROPOSED SCHEME INFORMATION IS AVAILABLE ON THE DRAWING SERIES PROVIDED WITHIN VOLUME III OF THE ENVIRONMENTAL IMPACT ASSESSMENT REPORT (EIAR).
  - WHERE PROPERTY LINE ADJUSTMENTS ARE PROPOSED, NEW BOUNDARY WALLS ARE PROPOSED TO MATCH EXISTING UNLESS OTHERWISE DETERMINED IN CONSULTATION WITH THE LANDOWNER.

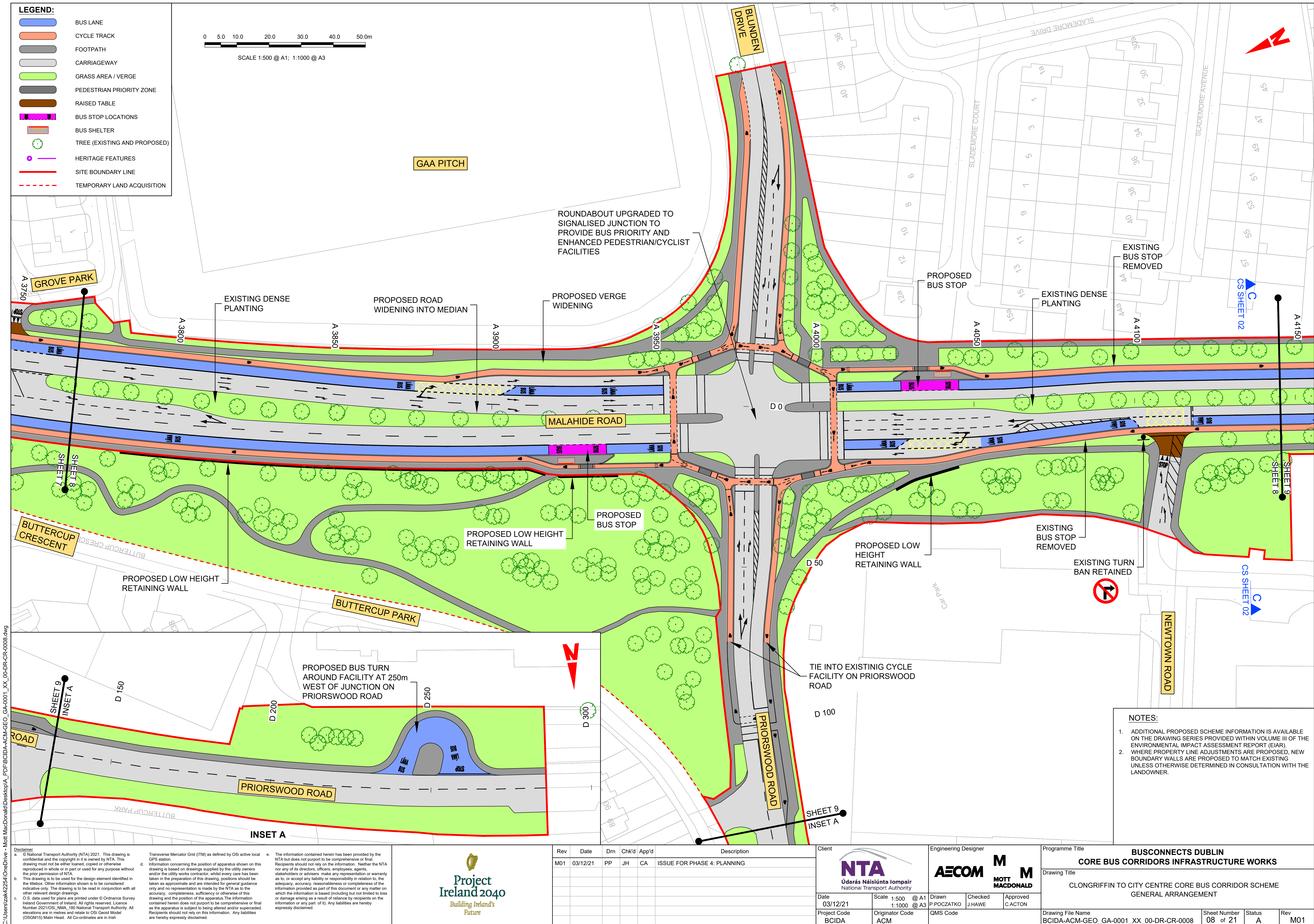
<div>Disclaimer</div> <div><div><div><div><div><div></div><div></div><div></div></div><div><div></div><div></div><div></div></div></div><div><div><div></div><div></div><div></div></div><div><div></div><div></div><div></div></div></div><div><div><div></div><div></div><div></div></div><div><div></div><div></div><div></div></div></div><div><div><div></div><div></div><div></div></div><div><div></div><div></div><div></div></div></div></div><div><div><div></div><div></div><div></div></div><div><div></div><div></div><div></div></div></div><div><div><div></div><div></div><div></div></div><div><div></div><div></div><div></div></div></div></div><div><div><div></div><div></div><div></div></div><div><div></div><div></div><div></div></div></div><div><div><div></div><div></div><div></div></div><div><div></div><div></div><div></div></div></div></div> <div><div><div></div><div></div><div></div></div><div><div></div><div></div><div></div></div></div> <div><div><div></div><div></div><div></div></div><div><div></div><div></div><div></div></div></div> <div><div><div></div><div></div><div></div></div><div><div></div><div></div><div></div></div></div> <div><div><div></div><div></div><div></div></div><div><div></div><div></div><div></div></div></div> <div><div><div></div><div></div><div></div></div><div><div></div><div></div><div></div></div></div> <div><div><div></div><div></div><div></div></div><div><div></div><div></div><div></div></div></div> <div><div><div></div><div></div><div></div></div><div><div></div><div></div><div></div></div></div> <div><div><div></div><div></div><div></div></div><div><div></div><div></div><div></div></div></div> <div><div><div></div><div></div><div></div></div><div><div></div><div></div><div></div></div></div> <div><div><div></div><div></div><div></div></div><div><div></div><div></div><div></div></div></div> <div><div><div></div><div></div><div></div></div><div><div></div><div></div><div></div></div></div> <div><div><div></div><div></div><div></div></div><div><div></div><div></div><div></div></div></div> <div><div><div></div><div></div><div></div></div><div><div></div><div></div><div></div></div></div> <div><div><div></div><div></div><div></div></div><div><div></div><div></div><div></div></div></div> <div><div><div></div><div></div><div></div></div><div><div></div><div></div><div></div></div></div> <div><div><div></div><div></div><div></div></div><div><div></div><div></div><div></div></div></div> <div><div><div></div><div></div><div></div></div><div><div></div><div></div><div></div></div></div> <div><div><div></div><div></div><div></div></div><div><div></div><div></div><div></div></div></div> <div><div><div></div><div></div><div></div></div><div><div></div><div></div><div></div></div></div> <div><div><div></div><div></div><div></div></div><div><div></div><div></div><div></div></div></div> <div><div><div></div><div></div><div></div></div><div><div></div><div></div><div></div></div></div> <div><div><div></div><div></div><div></div></div><div><div></div><div></div><div></div></div></div> <div><div><div></div><div></div><div></div></div><div><div></div><div></div><div></div></div></div> <div><div><div></div><div></div><div></div></div><div><div></div><div></div><div></div></div></div> <div><div><div></div><div></div><div></div></div><div><div></div><div></div><div></div></div></div> <div><div><div></div><div></div><div></div></div><div><div></div><div></div><div></div></div></div> <div><div><div></div><div></div><div></div></div><div><div></div><div></div><div></div></div></div> <div><div><div></div><div></div><div></div></div><div><div></div><div></div><div></div></div></div> <div><div><div></div><div></div><div></div></div><div><div></div><div></div><div></div></div></div> <div><div><div></div><div></div><div></div></div><div><div></div><div></div><div></div></div></div> <div><div><div></div><div></div><div></div></div><div><div></div><div></div><div></div></div></div> <div><div><div></div><div></div><div></div></div><div><div></div><div></div><div></div></div></div> <div><div><div></div><div></div><div></div></div><div><div></div><div></div><div></div></div></div> <div><div><div></div><div></div><div></div></div><div><div></div><div></div><div></div></div></div> <div><div><div></div><div></div><div></div></div><div><div></div><div></div><div></div></div></div> <div><div><div></div><div></div><div></div></div><div><div></div><div></div><div></div></div></div> <div><div><div></div><div></div><div></div></div><div><div></div><div></div><div></div></div></div> <div><div><div></div><div></div><div></div></div><div><div></div><div></div><div></div></div></div> <div><div><div></div><div></div><div></div></div><div><div></div><div></div><div></div></div></div> <div><div><div></div><div></div><div></div></div><div><div></div><div></div><div></div></div></div> <div><div><div></div><div></div><div></div></div><div><div></div><div></div><div></div></div></div> <div><div><div></div><div></div><div></div></div><div><div></div><div></div><div></div></div></div> <div><div><div></div><div></div><div></div></div><div><div></div><div></div><div></div></div></div> <div><div><div></div><div></div><div></div></div><div><div></div><div></div><div></div></div></div> <div><div><div></div><div></div><div></div></div><div><div></div><div></div><div></div></div></div> <div><div><div></div><div></div><div></div></div><div><div></div><div></div><div></div></div></div> <div><div><div></div><div></div><div></div></div><div><div></div><div></div><div></div></div></div> <div><div><div></div><div></div><div></div></div><div><div></div><div></div><div></div></div></div> <div><div><div></div><div></div><div></div></div><div><div></div><div></div><div></div></div></div> <div><div><div></div><div></div><div></div></div><div><div></div><div></div><div></div></div></div> <div><div><div></div><div></div><div></div></div><div><div></div><div></div><div></div></div></div> <div><div><div></div><div></div><div></div></div><div><div></div><div></div><div></div></div></div> <div><div><div></div><div></div><div></div></div><div><div></div><div></div><div></div></div></div> <div><div><div></div><div></div><div></div></div><div><div></div><div></div><div></div></div></div> <div><div><div></div><div></div><div></div></div><div><div></div><div></div><div></div></div></div> <div><div><div></div><div></div><div></div></div><div><div></div><div></div><div></div></div></div> <div><div><div></div><div></div><div></div></div><div><div></div><div></div><div></div></div></div> <div><div><div></div><div></div><div></div></div><div><div></div><div></div><div></div></div></div> <div><div><div></div><div></div><div></div></div><div><div></div><div></div><div></div></div></div> <div><div><div></div><div></div><div></div></div><div><div></div><div></div><div></div></div></div> <div><div><div></div><div></div><div></div></div><div><div></div><div></div><div></div></div></div> <div><div><div></div><div></div><div></div></div><div><div></div><div></div><div></div></div></div> <div><div><div></div><div></div><div></div></div><div><div></div><div></div><div></div></div></div> <div><div><div></div><div></div><div></div></div><div><div></div><div></div><div></div></div></div> <div><div><div></div><div></div><div></div></div><div><div></div><div></div><div></div></div></div> <div><div><div></div><div></div><div></div></div><div><div></div><div></div><div></div></div></div> <div><div><div></div><div></div><div></div></div><div><div></div><div></div><div></div></div></div> <div><div><div></div><div></div><div></div></div><div><div></div><div></div><div></div></div></div> <div><div><div></div><div></div><div></div></div><div><div></div><div></div><div></div></div></div> <div><div><div></div><div></div><div></div></div><div><div></div><div></div><div></div></div></div> <div><div><div></div><div></div><div></div></div><div><div></div><div></div><div></div></div></div> <div><div><div></div><div></div><div></div></div><div><div></div><div></div><div></div></div></div> <div><div><div></div><div></div><div></div></div><div><div></div><div></div><div></div></div></div> <div><div><div></div><div></div><div></div></div><div><div></div><div></div><div></div></div></div> <div><div><div></div><div></div><div></div></div><div><div></div><div></div><div></div></div></div> <div><div><div></div><div></div><div></div></div><div><div></div><div></div><div></div></div></div> <div><div><div></div><div></div><div></div></div><div><div></div><div></div><div></div></div></div> <div><div><div></div><div></div><div></div></div><div><div></div><div></div><div></div></div></div> <div><div><div></div><div></div><div></div></div><div><div></div><div></div><div></div></div></div> <div><div><div></div><div></div><div></div></div><div><div></div><div></div><div></div></div></div> <div><div><div></div><div></div><div></div></div><div><div></div><div></div><div></div></div></div> <div><div><div></div><div></div><div></div></div><div><div></div><div></div><div></div></div></div> <div><div><div></div><div></div><div></div></div><div><div></div><div></div><div></div></div></div> <div><div><div></div><div></div><div></div></div><div><div></div><div></div><div></div></div></div> <div><div><div></div><div></div><div></div></div><div><div></div><div></div><div></div></div></div> <div><div><div></div><div></div><div></div></div><div><div></div><div></div><div></div></div></div> <div><div><div></div><div></div><div></div></div><div><div></div><div></div><div></div></div></div> <div><div><div></div><div></div><div></div></div><div><div></div><div></div><div></div></div></div> <div><div><div></div><div></div><div></div></div><div><div></div><div></div><div></div></div></div> <div><div><div></div><div></div><div></div></div><div><div></div><div></div><div></div></div></div> <div><div><div></div><div></div><div></div></div><div><div></div><div></div><div></div></div></div> <div><div><div></div><div></div><div></div></div><div><div></div><div></div><div></div></div></div> <div><div><div></div><div></div><div></div></div><div><div></div><div></div><div></div></div></div> <div><div><div></div><div></div><div></div></div><div><div></div><div></div><div></div></div></div> <div><div><div></div><div></div><div></div></div><div><div></div><div></div><div></div></div></div> <div><div><div></div><div></div><div></div></div><div><div></div><div></div><div></div></div></div> <div><div><div></div><div></div><div></div></div><div><div></div><div></div><div></div></div></div> <div><div><div></div><div></div><div></div></div><div><div></div><div></div><div></div></div></div> <div><div><div></div><div></div><div></div></div><div><div></div><div></div><div></div></div></div> <div><div><div></div><div></div><div></div></div><div><div></div><div></div><div></div></div></div> <div><div><div></div><div></div><div></div></div><div><div></div><div></div><div></div></div></div> <div><div><div></div><div></div><div></div></div><div><div></div><div></div><div></div></div></div> <div><div><div></div><div></div><div></div></div><div><div></div><div></div><div></div></div></div> <div><div><div></div><div></div><div></div></div><div><div></div><div></div><div></div></div></div> <div><div><div></div><div></div><div></div></div><div><div></div><div></div><div></div></div></div> <div><div><div></div><div></div><div></div></div><div><div></div><div></div><div></div></div></div> <div><div><div></div><div></div><div></div></div><div><div></div><div></div><div></div></div></div> <div><div><div></div><div></div><div></div></div><div><div></div><div></div><div></div></div></div> <div><div><div></div><div></div><div></div></div><div><div></div><div></div><div></div></div></div> <div><div><div></div><div></div><div></div></div><div><div></div><div></div><div></div></div></div> <div><div><div></div><div></div><div></div></div><div><div></div><div></div><div></div></div></div> <div><div><div></div><div></div><div></div></div><div><div></div><div></div><div></div></div></div> <div><div><div></div><div></div><div></div></div><div><div></div><div></div><div></div></div></div> <div><div><div></div><div></div><div></div></div><div><div></div><div></div><div></div></div></div> <div><div><div></div><div></div><div></div></div><div><div></div><div></div><div></div></div></div> <div><div><div></div><div></div><div></div></div><div><div></div><div></div><div></div></div></div> <div><div><div></div><div></div><div></div></div><div><div></div><div></div><div></div></div></div> <div><div><div></div><div></div><div></div></div><div><div></div><div></div><div></div></div></div> <div><div><div></div><div></div><div></div></div><div><div></div><div></div><div></div></div></div> <div><div><div></div><div></div><div></div></div><div><div></div><div></div><div></div></div></div> <div><div><div></div><div></div><div></div></div><div><div></div><div></div><div></div></div></div> <div><div><div></div><div></div><div></div></div><div><div></div><div></div><div></div></div></div> <div><div><div></div><div></div><div></div></div><div><div></div><div></div><div></div></div></div> <div><div><div></div><div></div><div></div></div><div><div></div><div></div><div></div></div></div> <div><div><div></div><div></div><div></div></div><div><div></div><div></div><div></div></div></div> <div><div><div></div><div></div><div></div></div><div><div></div><div></div><div></div></div></div> <div><div><div></div><div></div><div></div></div><div><div></div><div></div><div></div></div></div> <div><div><div></div><div></div><div></div></div><div><div></div><div></div><div></div></div></div> <div><div><div></div><div></div><div></div></div><div><div></div><div></div><div></div></div></div> <div><div><div></div><div></div><div></div></div><div><div></div><div></div><div></div></div></div> <div><div><div></div><div></div><div></div></div><div><div></div><div></div><div></div></div></div> <div><div><div></div><div></div><div></div></div><div><div></div><div></div><div></div></div></div> <div><div><div></div><div></div><div></div></div><div><div></div><div></div><div></div></div></div> <div><div><div></div><div></div><div></div></div><div><div></div><div></div><div></div></div></div> <div><div><div></div><div></div><div></div></div><div><div></div><div></div><div></div></div></div> <div><div><div></div><div></div></div></div>					
--	--	--	--	--	--

DO NOT SCALE USE FIGURED DIMENSIONS ONLY







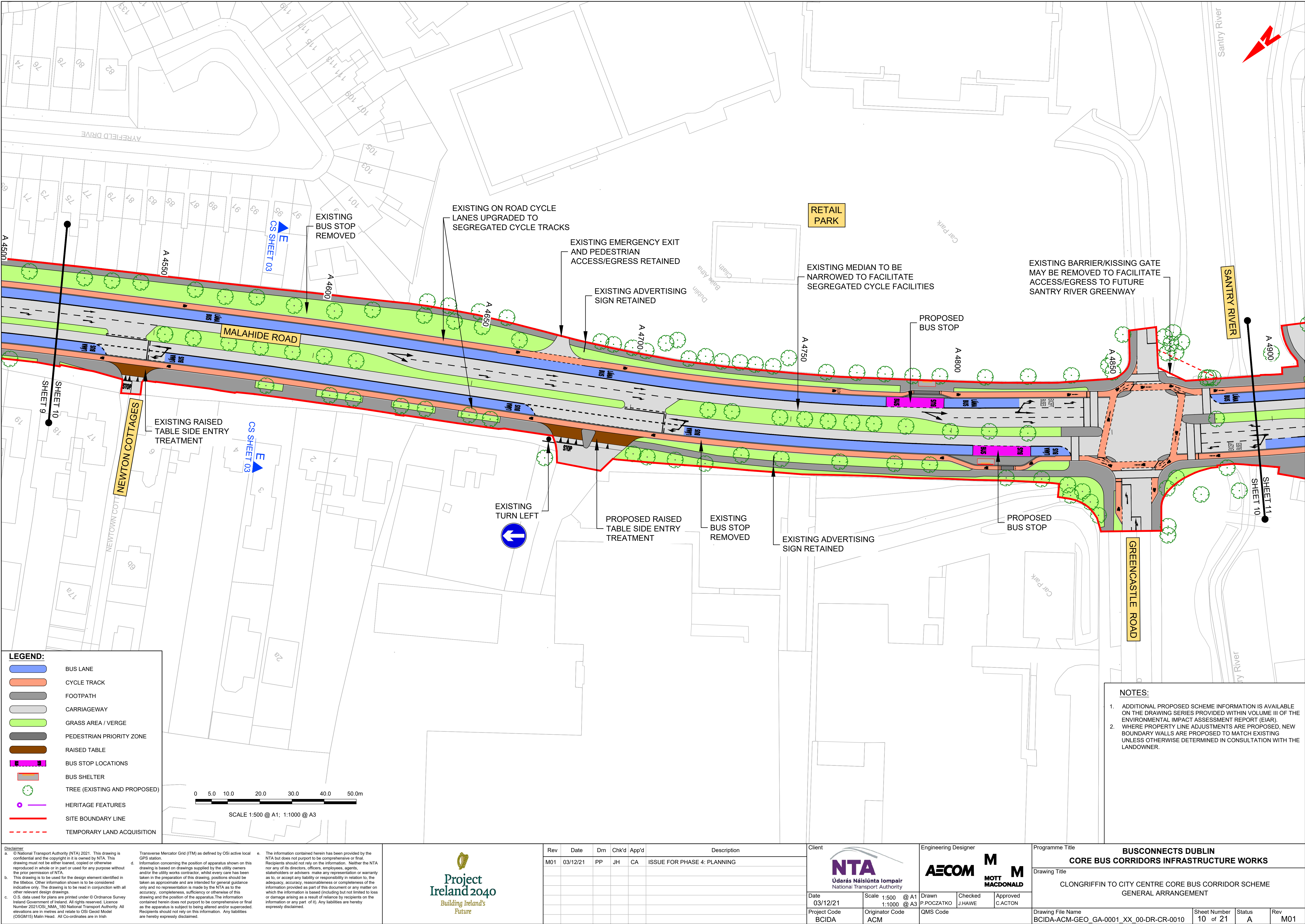








C:\Users\zak42254\OneDrive - Mott MacDonald\Desktop\A\_PDF\BCIDA-ACM-GEO\_GA-0001\_XX\_00-DR-CR-0010.dwg







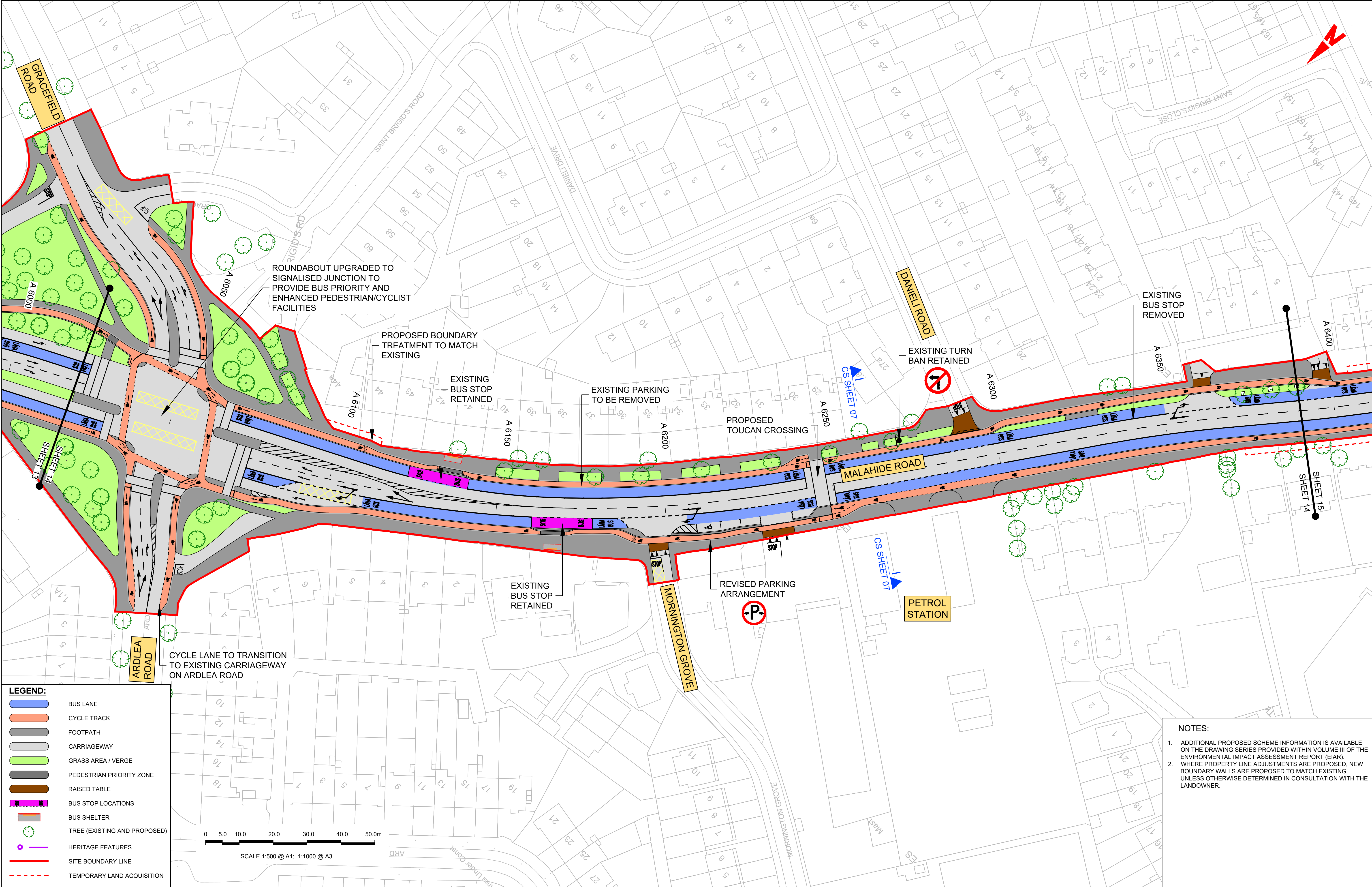












LEGEND:

BUS LANE

CYCLE TRACK

FOOTPATH

CARRIAGEWAY

GRASS AREA / VERGE

PEDESTRIAN PRIORITY ZONE

RAISED TABLE

BUS STOP LOCATIONS

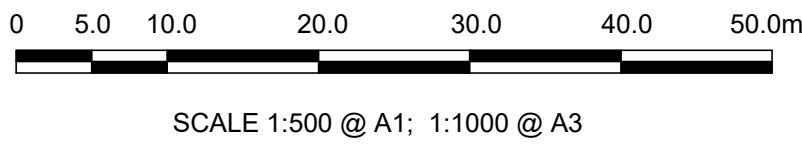
BUS SHELTER

TREE (EXISTING AND PROPOSED)

HERITAGE FEATURES

SITE BOUNDARY LINE

TEMPORARY LAND ACQUISITION



- NOTES:
1.

ADDITIONAL PROPOSED SCHEME INFORMATION IS AVAILABLE ON THE DRAWING SERIES PROVIDED WITHIN VOLUME III OF THE ENVIRONMENTAL IMPACT ASSESSMENT REPORT (EIAR).
2.

WHERE PROPERTY LINE ADJUSTMENTS ARE PROPOSED, NEW BOUNDARY WALLS ARE PROPOSED TO MATCH EXISTING UNLESS OTHERWISE DETERMINED IN CONSULTATION WITH THE LANDOWNER.

Disclaimer

a. © National Transport Authority (NTA) 2021. This drawing is confidential and the copyright in it is owned by NTA. This drawing must not be either loaned, copied or otherwise reproduced in whole or in part or used for any purpose without the prior permission of NTA.

b. This drawing is to be used for the design element identified in the titlebox. Other information shown is to be considered indicative only. The drawing is to be read in conjunction with all other relevant design drawings.

c. O.S. data used for plans are printed under © Ordnance Survey Ireland Government of Ireland. All rights reserved. Licence Number 2021/OSI\_NMA\_180 National Transport Authority. All elevations are in metres and relate to OSI Geoid Model (OSGM15) Mean Head. All Co-ordinates are in Irish

Transverse Mercator Grid (ITM) as defined by OSI active local GPS station.

d. Information concerning the position of apparatus shown on this drawing is based on drawings supplied by the utility owners and/or the utility works contractor, whilst every care has been taken in the preparation of this drawing, positions should be taken as approximate and are intended for general guidance only and no representation is made by the NTA as to the accuracy, completeness, sufficiency or otherwise of this drawing and the position of the apparatus. The information contained herein does not purport to be comprehensive or final as the apparatus is subject to being altered and/or superceded. Recipients should not rely on this information. Any liabilities are hereby expressly disclaimed.

e. The information contained herein has been provided by the NTA but does not purport to be comprehensive or final. Recipients should not rely on the information. Neither the NTA nor any of its directors, officers, employees, agents, stakeholders or advisers make any representation or warranty as to, or accept any liability or responsibility in relation to, the adequacy, accuracy, reasonableness or completeness of the information provided as part of this document or any matter on which the information is based (including but not limited to loss or damage arising as a result of reliance by recipients on the information or any part of it). Any liabilities are hereby expressly disclaimed.

Project Ireland 2040

Building Ireland's Future

Rev	Date	Drm	Chk'd	App'd	Description
M01	03/12/21	PP	JH	CA	ISSUE FOR PHASE 4: PLANNING

Údarás Náisiúnta Iompair

National Transport Authority

Date

03/12/21

Scale

1:500 @ A1  
1:1000 @ A3

Drawn

P.POCZATKO

Checked

J.HAWE

Approved

C.ACTON

Project Code

BCIDA

Originator Code

ACM

QMS Code

Engineering Designer

Programme Title

**BUSCONNECTS DUBLIN**  
**CORE BUS CORRIDORS INFRASTRUCTURE WORKS**

Drawing Title

CLONGRIFFIN TO CITY CENTRE CORE BUS CORRIDOR SCHEME  
GENERAL ARRANGEMENT

Drawing File Name

BCIDA-ACM-GEO\_GA-0001\_XX\_00-DR-CR-0014

Sheet Number

14 of 21

Status

A

Rev

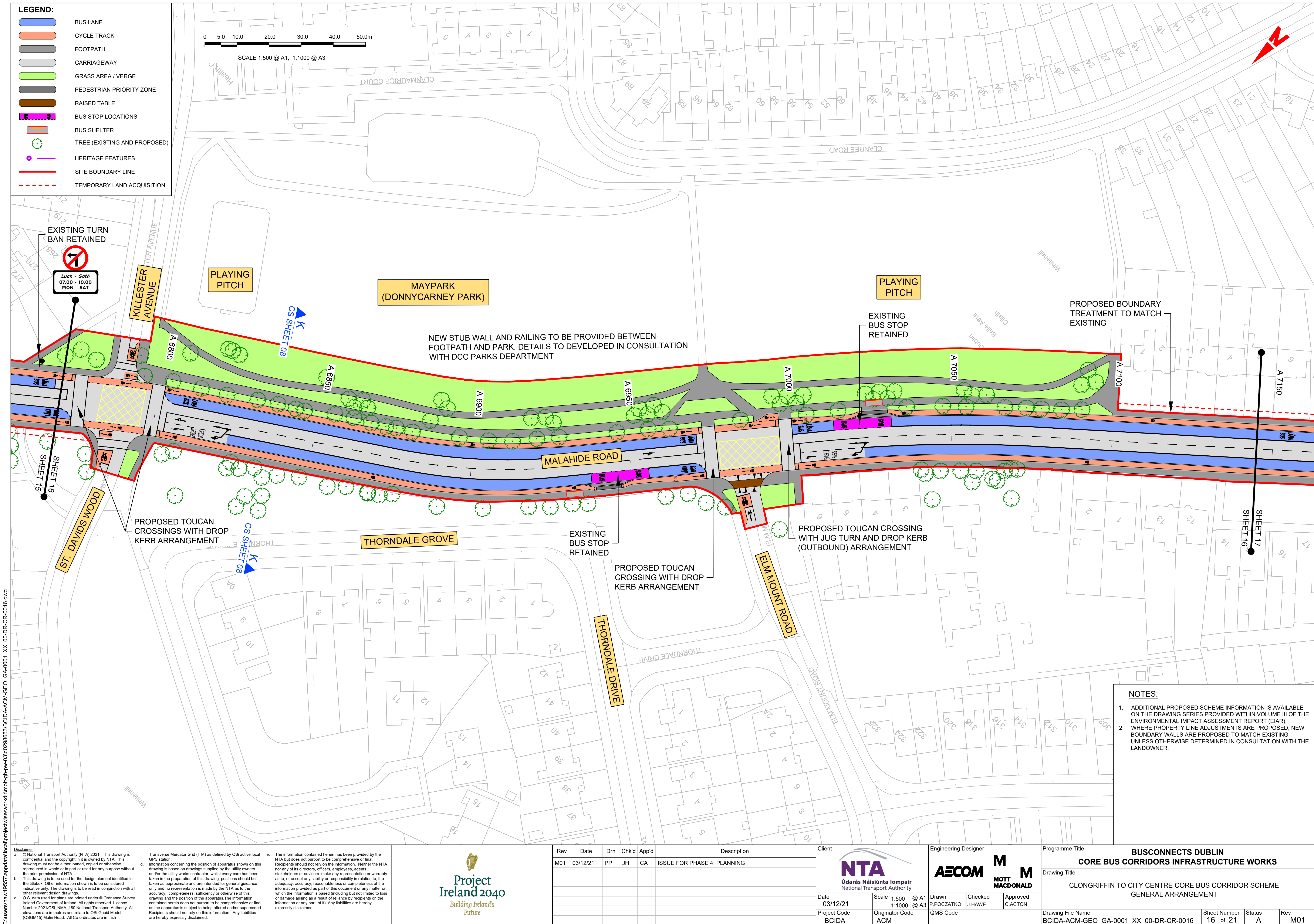
M01

DO NOT SCALE USE FIGURED DIMENSIONS ONLY



















0 5.0 10.0 20.0 30.0 40.0 50.0m

SCALE 1:500 @ A1; 1:1000 @ A3



- |  |  |
|--|--|
| <p><b>a.</b> © International Transport Authority (NTA) 2021. This drawing is confidential and the copyright in it is reserved by NTA. No part of this drawing may be either loaned, copied or otherwise reproduced in whole or in part used for any purpose without the prior permission of NTA.</p> <p>This drawing is to be used for the design element identified with its form number and title. It shall not be used for any other purpose. The drawing is to be used as indicated in the accompanying information only. The drawing is to be used in conjunction with all other relevant design drawings.</p> <p>For more details please refer to © Ordnance Survey Ireland Government of Ireland. All rights reserved. Licence Number: OS/INT/2021/MMA_180 National Transport Authority. All references are in metres and relate to OS Grid Reference (OSGM25) Main Head. All Co-ordinates are in Irish</p> | <p><b>e.</b> Transverse Mercator GRS (ITM) as defined by OSI active local GPS station.</p> <p>Information concerning the position of apparatus shown in this drawing based on drawings supplied by the utility owners. The utility owners warrant that they have made every effort in the preparation of this drawing, positions should be as accurate as possible, reasonable and available under the circumstances and no representation is made by the NTA as to the accuracy, completeness, sufficiency or otherwise of this information relating to the position of apparatus. Information contained herein does not purport to be comprehensive or final as the apparatus is subject to being altered and/or superceded. Drawings should not rely on this information. Any liabilities are hereby expressly disclaimed.</p> <p>The information contained herein has been provided by the NTA but does not purport to be comprehensive or final. Recipients should not rely on the information. Neither the NTA nor any of its directors, officers, employees, agents, advisers or advisors make any representation or warranty as to, or accept any liability or responsibility in relation to, the information, statements, estimates and/or calculations or information provided as part of this document or any assurance on which the information is based (including but not limited to loss of profits arising as a result of reliance on the information or any part of it). Any liabilities are hereby expressly disclaimed.</p> |
|--|--|

	Rev	Date	Drm	Chk'd	App'd	Description
	M01	03/12/21	PP	JH	CA	ISSUE FOR PHASE 4: PLANNING

Client		Engineering Designer	
 <p><b>NTA</b> Údárás Náisiúnta Iompair National Transport Authority</p>		 	
Date	Scale 1:500 @ A1 1:1000 @ A3	Drawn P.POZATSKO	Checked J.HAWE
03/12/21		Approved C.ACTON	
Project Code R/CIDA	Originator Code A.C.M.	QMS Code	

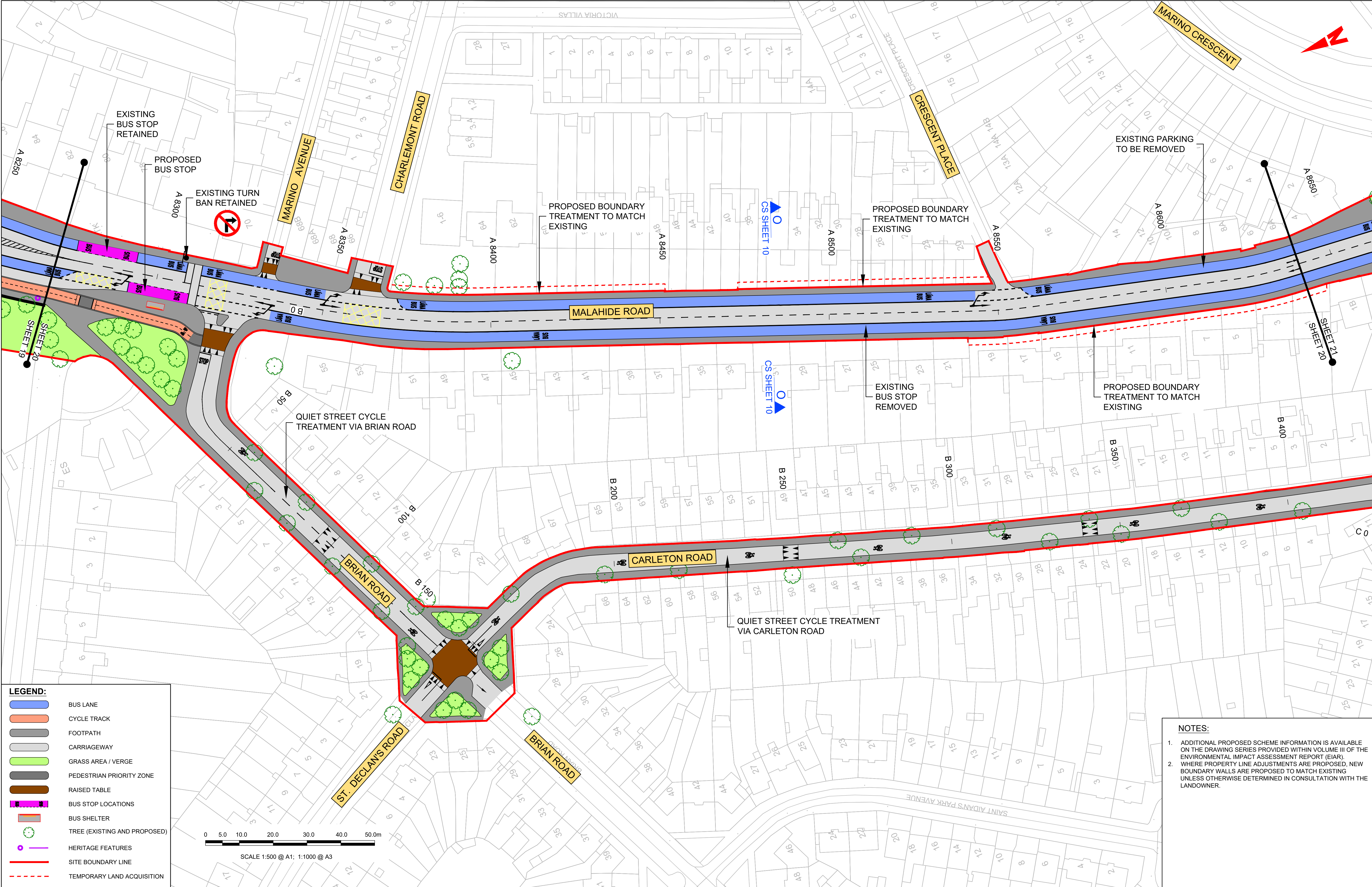
Programme Title <b>BUSCONNECTS DUBLIN CORE BUS CORRIDORS INFRASTRUCTURE WORKS</b>					
Drawing Title <b>CLONGRIFFIN TO CITY CENTRE CORE BUS CORRIDOR SCHEME GENERAL ARRANGEMENT</b>					
Drawing File Name BCIDA-ACM-GFO GA-0001 XX 00-DR-CR-0018			Sheet Number 18 of 21	Status A	Rev M01

DO NOT SCALE USE FIGURED DIMENSIONS ONLY



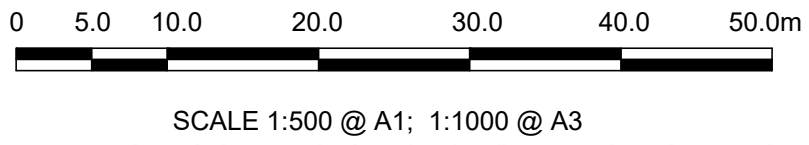






**LEGEND:**

- BUS LANE
- CYCLE TRACK
- FOOTPATH
- CARRIAGEWAY
- GRASS AREA / VERGE
- PEDESTRIAN PRIORITY ZONE
- RAISED TABLE
- BUS STOP LOCATIONS
- BUS SHELTER
- TREE (EXISTING AND PROPOSED)
- HERITAGE FEATURES
- SITE BOUNDARY LINE
- TEMPORARY LAND ACQUISITION



- NOTES:**
- ADDITIONAL PROPOSED SCHEME INFORMATION IS AVAILABLE ON THE DRAWING SERIES PROVIDED WITHIN VOLUME III OF THE ENVIRONMENTAL IMPACT ASSESSMENT REPORT (EIAR).
  - WHERE PROPERTY LINE ADJUSTMENTS ARE PROPOSED, NEW BOUNDARY WALLS ARE PROPOSED TO MATCH EXISTING UNLESS OTHERWISE DETERMINED IN CONSULTATION WITH THE LANDOWNER.

Disclaimer

a. © National Transport Authority (NTA) 2021. This drawing is confidential and the copyright in it is owned by NTA. This drawing must not be either loaned, copied or otherwise reproduced in whole or in part or used for any purpose without the prior permission of NTA.

b. This drawing is to be used for the design element identified in the titlebox. Other information shown is to be considered indicative only. The drawing is to be read in conjunction with all other relevant design drawings.

c. O.S. data used for plans are printed under © Ordnance Survey Ireland Government of Ireland. All rights reserved. Licence Number 2021/OSI\_NMA\_180 National Transport Authority. All elevations are in metres and relate to OSI Geoid Model (OSGM15) Mean Head. All Co-ordinates are in Irish Transverse Mercator Grid (ITM) as defined by OSI active local GPS station.

d. Information concerning the position of apparatus shown on this drawing is based on drawings supplied by the utility owners and/or the utility works contractor, whilst every care has been taken in the preparation of this drawing, positions should be taken as approximate and are intended for general guidance only and no representation is made by the NTA as to the accuracy, completeness, sufficiency or otherwise of this drawing and the position of the apparatus. The information contained herein does not purport to be comprehensive or final as the apparatus is subject to being altered and/or superceded. Recipients should not rely on this information. Any liabilities are hereby expressly disclaimed.

e. The information contained herein has been provided by the NTA but does not purport to be comprehensive or final. Recipients should not rely on the information. Neither the NTA nor any of its directors, officers, employees, agents, stakeholders or advisers make any representation or warranty as to, or accept any liability or responsibility in relation to, the adequacy, accuracy, reasonableness or completeness of the information provided as part of this document or any matter on which the information is based (including but not limited to loss or damage arising as a result of reliance by recipients on the information or any part of it). Any liabilities are hereby expressly disclaimed.

**Project Ireland 2040**

Building Ireland's Future

Rev	Date	Dm	Chk'd	App'd	Description
M01	03/12/21	PP	JH	CA	ISSUE FOR PHASE 4: PLANNING

Client

**NTA**

Údarás Náisiúnta Iompair  
National Transport Authority

Engineering Designer

**AECOM**

**MOTT MACDONALD**

Programme Title

**BUSCONNECTS DUBLIN**

**CORE BUS CORRIDORS INFRASTRUCTURE WORKS**

Date

03/12/21

Scale

1:500 @ A1  
1:1000 @ A3

Drawn

P.POCZATKO

Checked

J.HAWE

Approved

C.ACTON

Project Code

BCIDA

Originator Code

ACM

QMS Code

Drawing File Name

BCIDA-ACM-GEO\_GA-0001\_XX\_00-DR-CR-0020

Sheet Number

20 of 21

Status

A

Rev

M01

DO NOT SCALE USE FIGURED DIMENSIONS ONLY



